

PW3360/PW3365 Settings and Download Application User's Manual

Table of Contents

1. Introduction.....	2
1.1 Overview.....	2
1.2 Copy/Transfer/Copyright, and other Cautions	2
1.2.1 Copyright	2
1.2.2 Conditions for Use.....	2
1.2.3 Responsibilities for Use.....	2
1.3 Required System Configuration	3
2. Installation	4
3. Startup Screen.....	10
3.1 [Setup] Button	11
3.2 [Download] Button.....	11
3.3 Command Transmitting and Receiving Function.....	11
4. Setup Function.....	12
4.1 Displaying all of the PW3360/PW3365 settings in the application.	12
4.2 Writing Application Settings to the PW3360/PW3365	12
4.3 Saving a Settings File.....	12
4.4 Loading a Settings File to the Device.....	13
4.5 Starting and Stopping Measurement.....	13
5. Download Function	13
5.1 Selecting a Media Type	13
5.2 Click [Contents].....	14
5.3 Click [Download].....	14
5.4 Canceling a Download.....	15
6. Uninstallation.....	15
6.1 Uninstalling the PW3360/PW3365 Settings and Download Application	15
6.1.1 On Windows 7.....	16
6.1.2 On Windows XP	17
6.2 Uninstalling the Microsoft .NET Framework 4 Client Profile	18
6.3 Uninstalling the Microsoft Visual C++ 2010 SP1 Redistributable Package (x86)...	18
7. Specifications.....	19
7.1 General Specifications.....	19
7.2 Function Specifications.....	19

1. Introduction

1.1 Overview

The PW3360/PW3365 Settings and Download Application is communications software designed for use with the PW3360/PW3365 Clamp On Power Logger.

You can use this software to download data from a PW3360/PW3365 connected to a PC via LAN or USB to configure, start, or stop measurement for the PW3360/PW3365 unit.

1.2 Copy/Transfer/Copyright, and other Cautions

1.2.1 Copyright

HIOKI E.E. CORPORATION reserves all rights, including copyrights, to the program's executable files and documents.

1.2.2 Conditions for Use

This software cannot be repackaged for sale with any printed material, software, or other bundle for profit without the permission of the copyright owner. Furthermore, this software cannot be reverse engineered or modified in any way without the permission of the copyright owner.

1.2.3 Responsibilities for Use

-This application is software that is provided free of charge. It may be used freely under the responsibility of the user.

-HIOKI E.E. CORPORATION shall not be held responsible for any damages resulting from the use of this application.

-HIOKI E.E. CORPORATION shall not be held responsible for any bugs or other problems that result from the use of this application.

-HIOKI E.E. CORPORATION will not answer any questions related to this application.

-The application may be changed at any time without prior notice.

Note: Windows, Microsoft .NET Framework, and Visual C++ are the registered trademarks or trademarks of Microsoft Corporation in the United States of America.

1.3 Required System Configuration

The following system requirements must be met to run the PW3360/PW3365 Settings and Download Application.

Computer	PC/AT Compatible (DOS/V)
OS	Windows XP SP3 or higher (32-bit) Windows Vista SP2 or higher (32-bit) Windows 7 SP1 (32 or 64-bit) Windows 8 (32 or 64-bit) The following software must also be installed: • Microsoft .NET Framework 4 Client Profile • Microsoft Visual C++ 2010 SP1 Redistributable Package (x86) USB drivers (for PW3360/PW3365) *If using USB communications
CPU	1.0 GHz or better (2.0 GHz or better recommended)
RAM	1GB(x86) or 2GB(x64) or more
Hard Disk	At least 128 MB of free space (when launched)
Display	1024 x 768 or better resolution, minimum of 65,536 colors
LAN Specifications	10BASE-T/100BASE-TX
LAN Protocol	TCP/IP
USB Specifications	USB 2.0

Note: The software may not run properly on some machines, even if the above requirements are met.

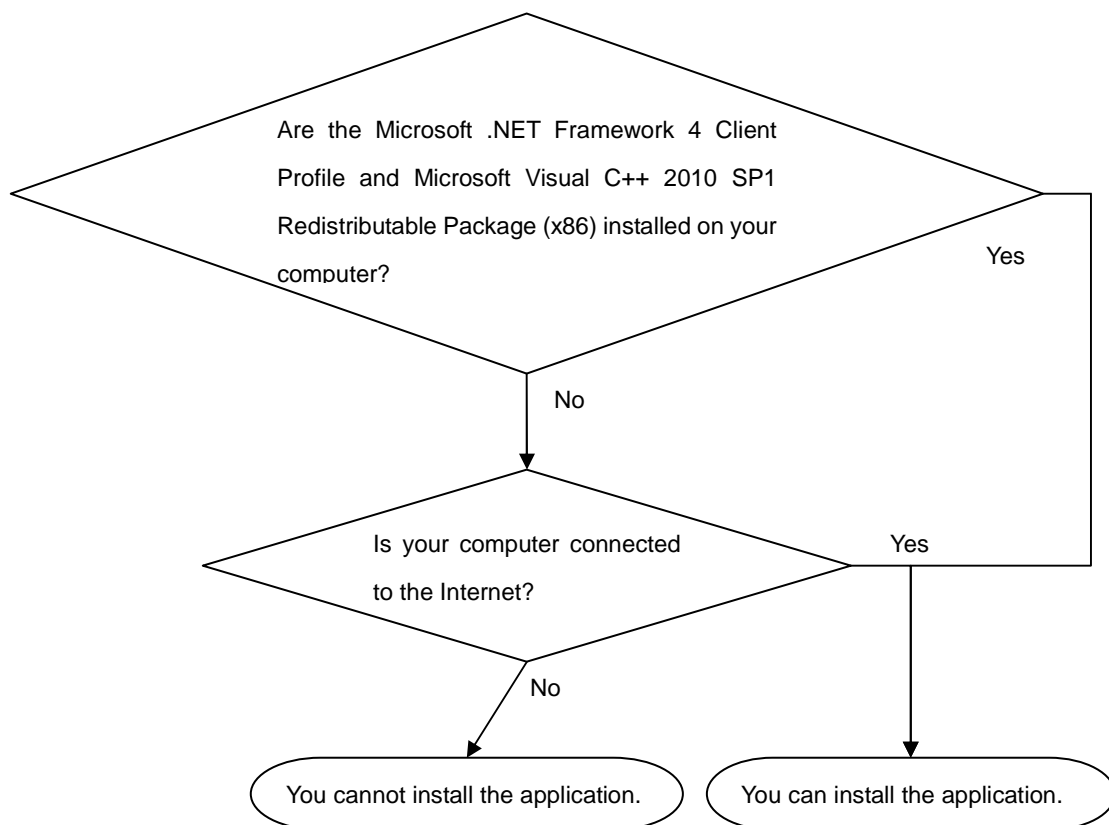
2. Installation

To install this application, both the [Microsoft .NET Framework 4 Client Profile](#) and [Microsoft Visual C++ 2010 SP1 Redistributable Package \(x86\)](#) must be installed.

If these two packages are not installed and your computer is connected to the Internet, both the Microsoft .NET Framework 4 Client Profile and Microsoft Visual C++ 2010 SP1 Redistributable Package (x86) will be downloaded and installed automatically before the application is installed.

If these two packages are not installed and your computer is not connected to the Internet, you will be unable to install the application.

You can also download both the Microsoft .NET Framework 4 Client Profile and Microsoft Visual C++ 2010 SP1 Redistributable Package (x86) yourself from the Microsoft homepage.



When you install the latest version, it will be overwritten automatically if you have already installed the previous version.

Note

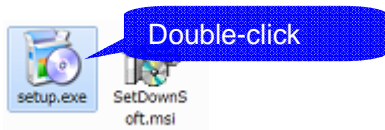
- Be sure to install the application as Administrator.
- You may not be able to install the application if other applications are running. Close as many applications as you can before installing. Antivirus software in particular may prohibit the

software from being installed, even if there are no viruses detected. If this should occur, configure your antivirus software in order to allow you to install the application.

Example: Installation on Windows 7

* The messages that appear here in this example may vary depending on your installed OS.

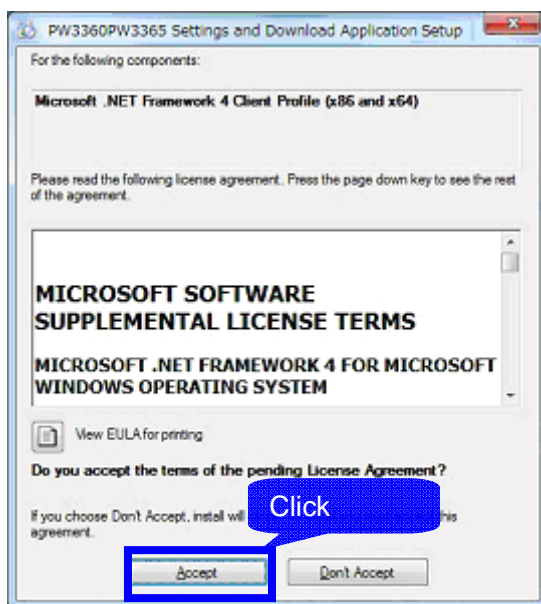
1. Close all open applications.
2. Double-click on [setup.exe] (the SETUP file) (The .exe file extension may not appear in some cases.) to launch the installer.



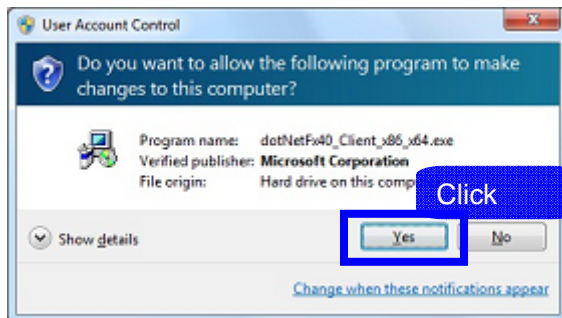
3. If the Microsoft .NET Framework 4 Client Profile is not installed on your computer

If the Microsoft .NET Framework 4 Client Profile is not yet installed on your computer, the following screen is displayed. [Be sure that your computer is connected to the Internet](#), and then proceed with the installation.

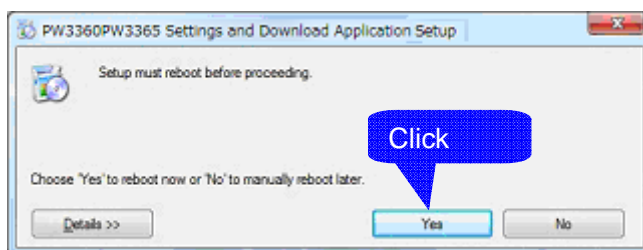
Click [Accept].



If a dialog appears asking if you want to continue execution, click [Yes] to continue.



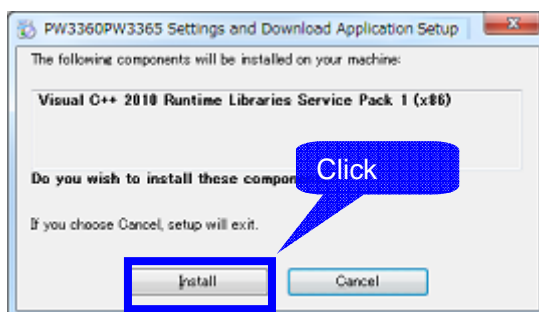
If a message appears requesting you to restart your computer, click [Yes] and restart your computer. Upon restarting, the installation will resume automatically.



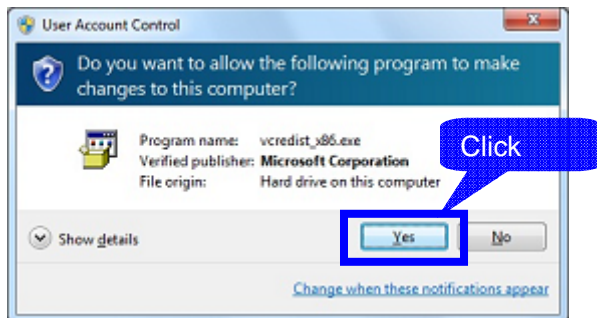
4. If the Microsoft Visual C++ 2010 SP1 Redistributable Package (x86) is not installed on your computer

If the Microsoft Visual C++ 2010 SP1 Redistributable Package (x86) is not yet installed on your computer, the following screen is displayed. *Be sure that your computer is connected to the Internet,* and then proceed with the installation.

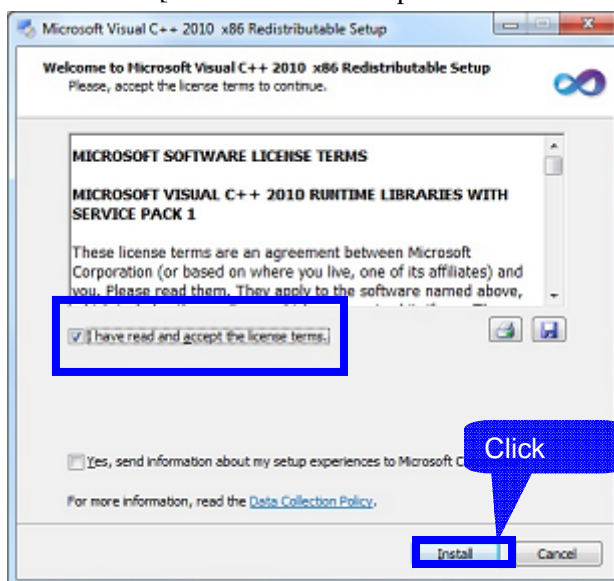
Click [Install].



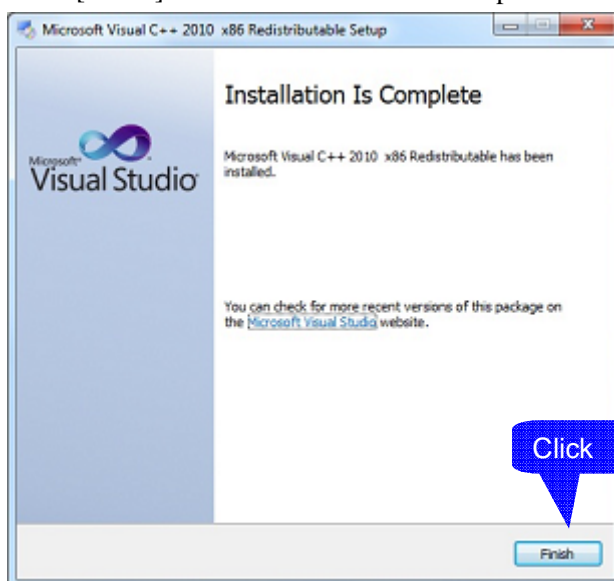
If a dialog appears asking if you want to continue execution, click [Yes] to continue.



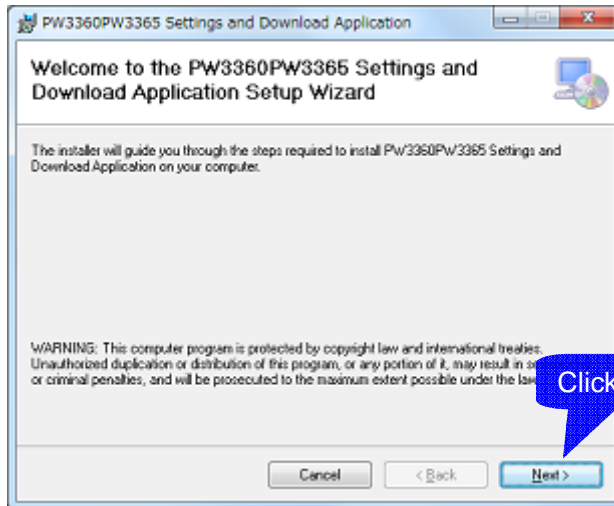
Confirm that [I have read and accept the license term?] is selected, then click [Install].



Click [Finish] once the installation has completed.



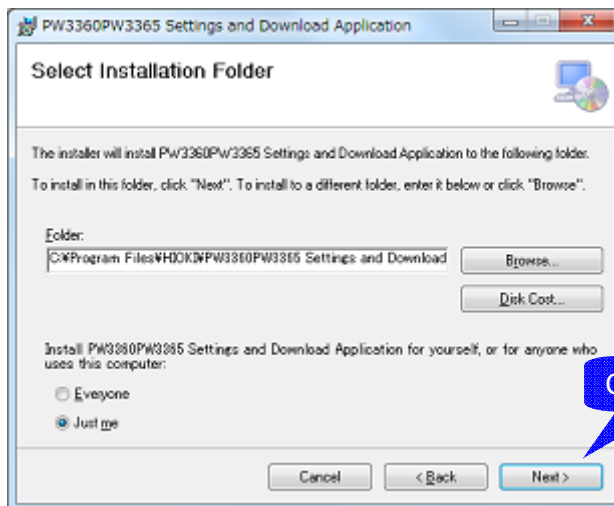
5 Click [Next] when the PW3360PW3365 Settings and Download Application Setup Wizard is displayed, then check the installation destination.



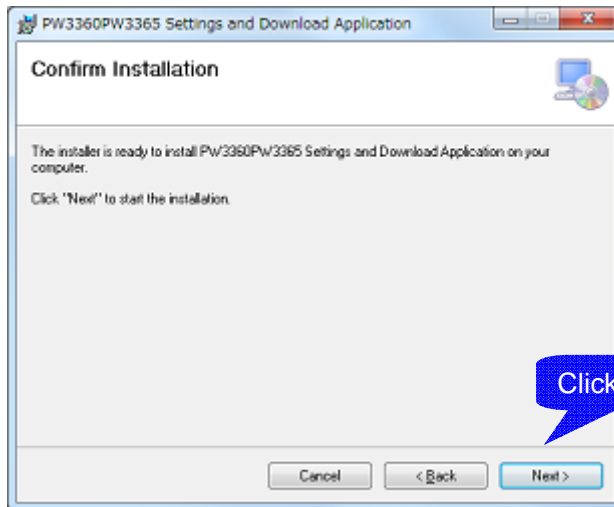
6. Specify the installation folder.

If you want to change the installation folder, click [Browse] and change the installation folder. Normally this folder does not need to be changed.

If you do not need to change the installation folder, click [Next] to continue.

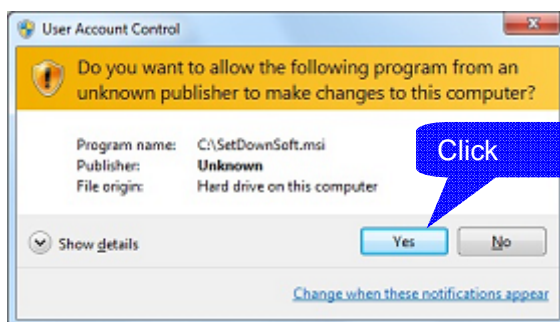


Click [Next].

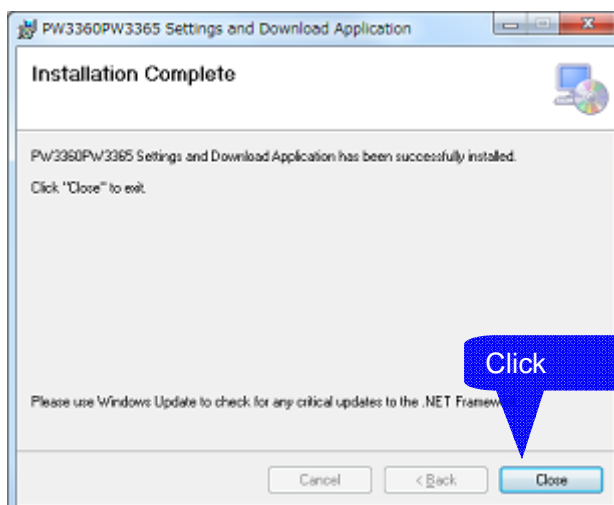


7. The installation begins.

If a dialog appears asking if you want to continue execution, click [Yes] to continue.



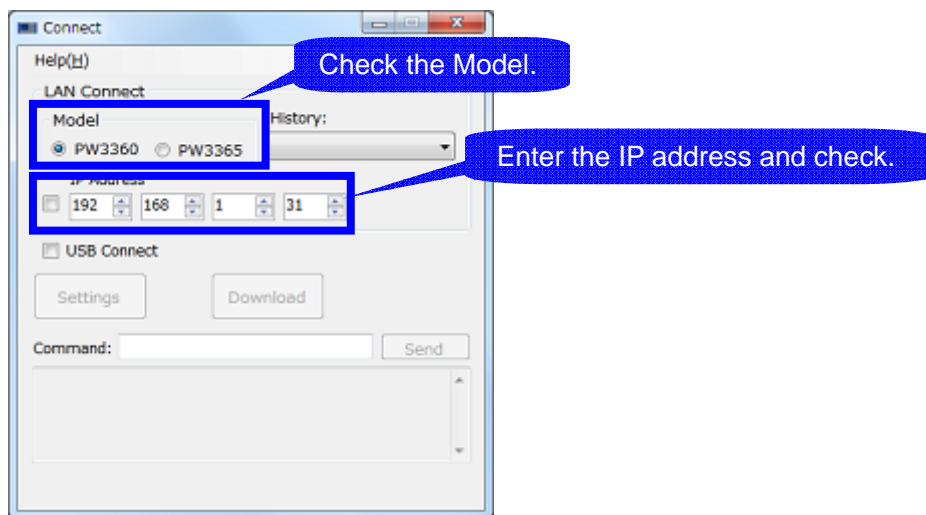
8. Click [Close] once the installation has finished.



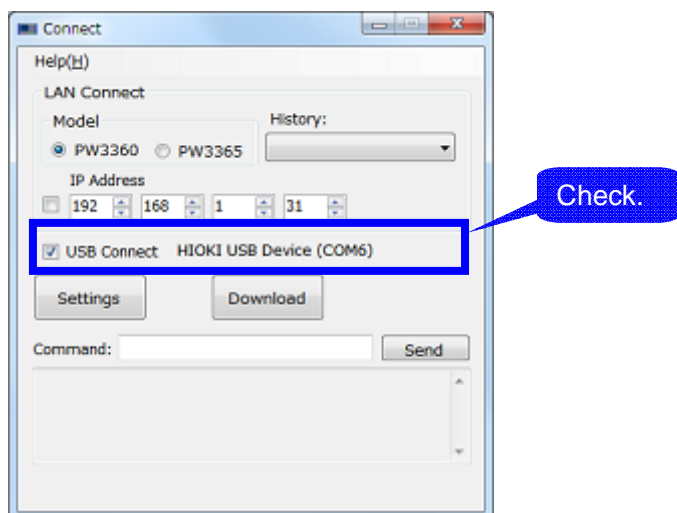
3. Startup Screen

Select [All Programs] - [HIOKI] - [PW3360/PW3365] - [PW3360/PW3365 Settings and Download] from the Start Menu to launch the application.

When connecting via LAN, check the model, input an IP address and put a check. Connected IP addresses can be selected from the [History](up to 8 addresses).



When connecting via USB, put a check into [USB Connect]. Once you have established a connection, it is displayed as “HIOKI USB Device(COMxx)”.



Once you have established a connection, click either [Setup] or [Download].

Note: • If you are unable to connect even though you are sure your connection settings are correct, close the application and restart the PW3360/PW3365, then try launching the application and trying again.

- When connecting via USB, be sure to install the USB Driver (for PW3360/PW3365) to your computer first.
- You cannot connect via USB when the PW3360/PW3365 connect to a computer by mass-storage.
- When you restart the PW3360/PW3365, also restart the application.

3.1 [Setup] Button

Opens the setup form.

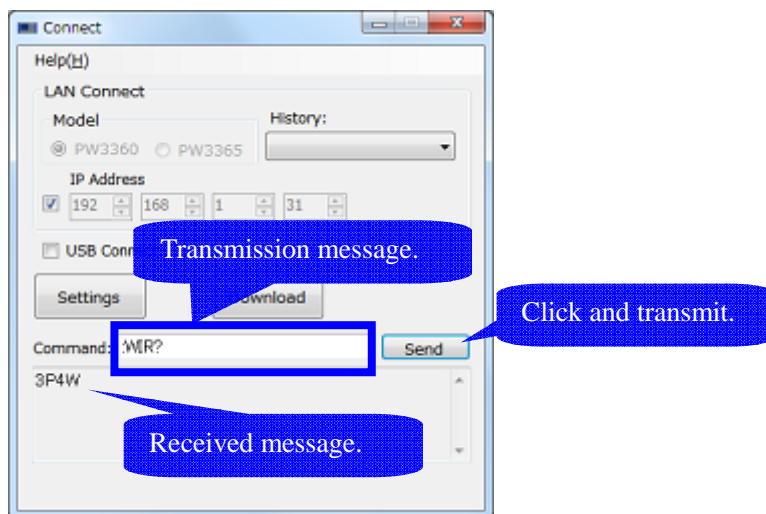
3.2 [Download] Button

Opens the download form.

3.3 Command Transmitting and Receiving Function

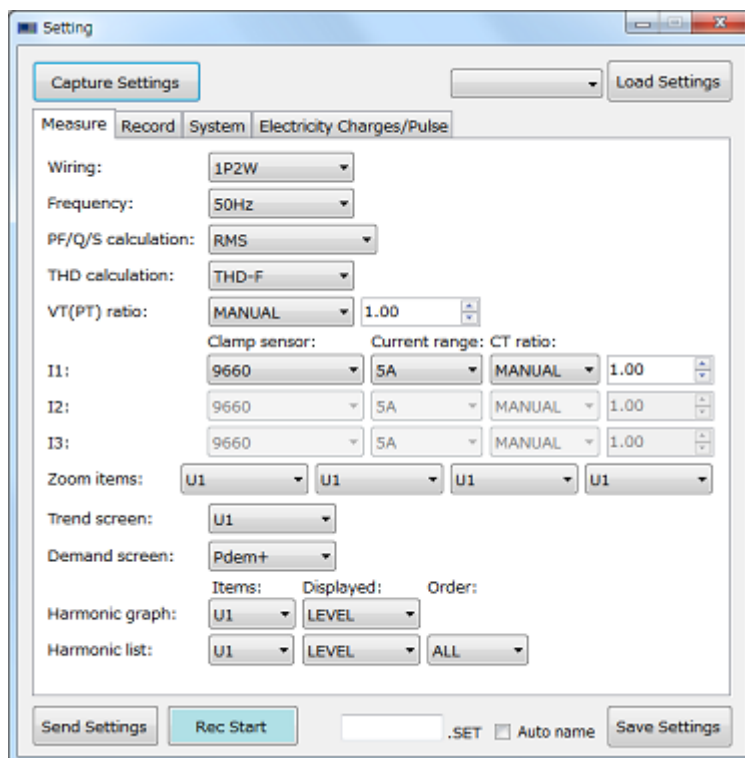
コマンド/クエリを入力し、接続している本体と送受信することができます

You can input commands or queries and transmit and receive from communicated device.



- Note:
- Message to get the file data(:CARD:TRAN? :CARD:PICK? etc.) are not allowed.
 - The maximum character count of the received message is 60000. This application will exit after error message when it receives more strings.

4. Setup Function



4.1 Displaying all of the PW3360/PW3365 settings in the application.

Click [Capture Settings]. The PW3360/PW3365 settings are displayed in the application.

4.2 Writing Application Settings to the PW3360/PW3365

Edit and insert values and items for settings in the application as required.

Click [Send setting]. This writes the settings in the application to the PW3360/PW3365.

To set the clock on the PW3360/PW3365, select the [Set a Clock] option.

If you select the [Synchronizing the PC Clock.] option, the time set on your computer when you click [Send settings] will be set as the time on the PW3360/PW3365.

4.3 Saving a Settings File

Input setting file name to save. When naming auto name, check [Auto name]. Click [Save Settings] and save set file in the device. It will be saved in the "SETTING" folder if you saved to the SD card.

Note:

- Save the device setting instead of the settings in the application.
- Please change the [Save destination] at the application to switch of the SD card / internal memory of the save destination.

4.4 Loading a Settings File to the Device

Select set file name and click [Load Settings]. Settings of the device will change.

- Note:
- Display of the application does not change.
 - The maximum number of files that can be selected is 20.
 - You can select from the settings file in the "SETTING" folder when the save destination is "SD CARD".

4.5 Starting and Stopping Measurement

Click [Rec Start] to begin recording according to the selected starting method. The button changes to read [Rec Stop].

Click [Rec Stop] to stop recording.

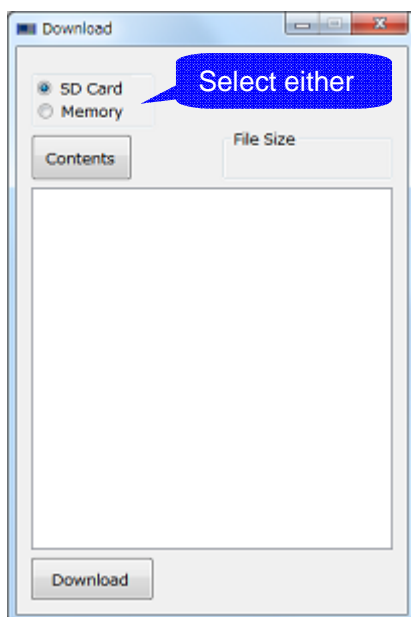
- Note:
- You cannot start or stop recording when the PW3360/PW3365 itself is incapable of starting or stopping recording.
 - If recording is started or stopped on the PW3360/PW3365 while the application is running, this will not be reflected in the application.

5. Download Function

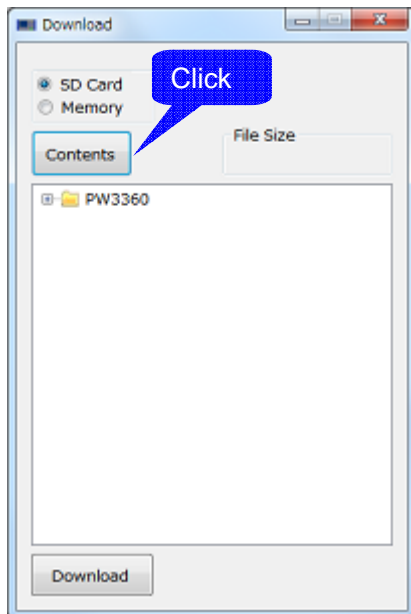
Instructions for Downloading

5.1 Selecting a Media Type

Select between either [SD Card] or [Memory].



5.2 Click [Contents]

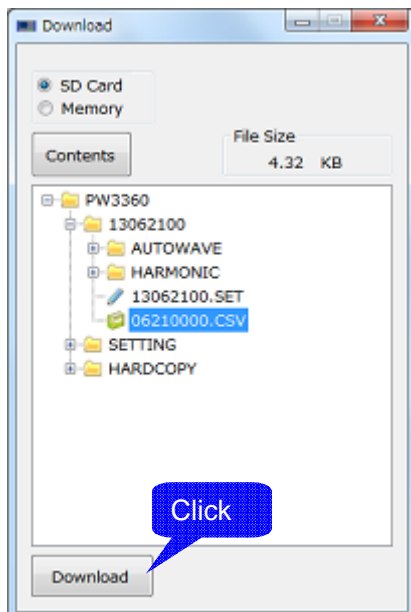


The folders and files on the selected media are displayed.

Select the file or folder you want to download.

If you selected a file, the size of the file will be displayed. Use this information for your reference.

5.3 Click [Download]



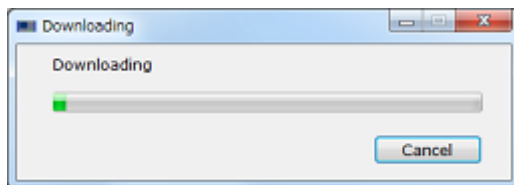
When you click [Download], a dialog appears asking you to specify the location to save the file.
Specify the location to save the file.

Click [OK] to start downloading.

A progress bar appears designating the download progress.

- Note
- You may not be able to download files or folders that were not created on the PW3360/PW3365.
 - You cannot download folders while the PW3360/PW3365 is recording.
 - Please set the measurement interval more than 1 minute to download the file being recorded.
 - This application will terminate after displaying an error message if large number of files and folders are in a single folder.
 - If an error occurs during downloading, your connection may be unstable.

5.4 Canceling a Download



Click [Cancel] under the progress bar, or click [X] to close the dialog and cancel the download. Any files or folders that were completely downloaded remain downloaded. Partially downloaded files are deleted.

- Note:
- When connected via USB, the application will close if a download is canceled. To relaunch and reconnect, restart the PW3360/PW3365 or remove and re-insert the USB cable.

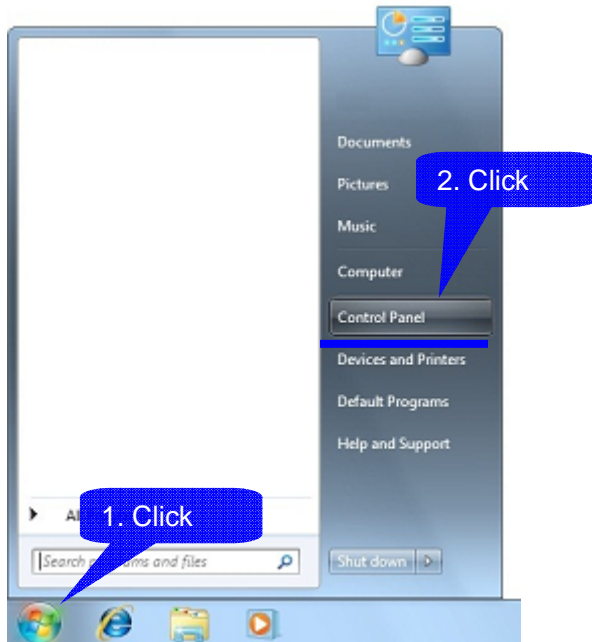
6. Uninstallation

6.1 Uninstalling the PW3360/PW3365 Settings and Download Application

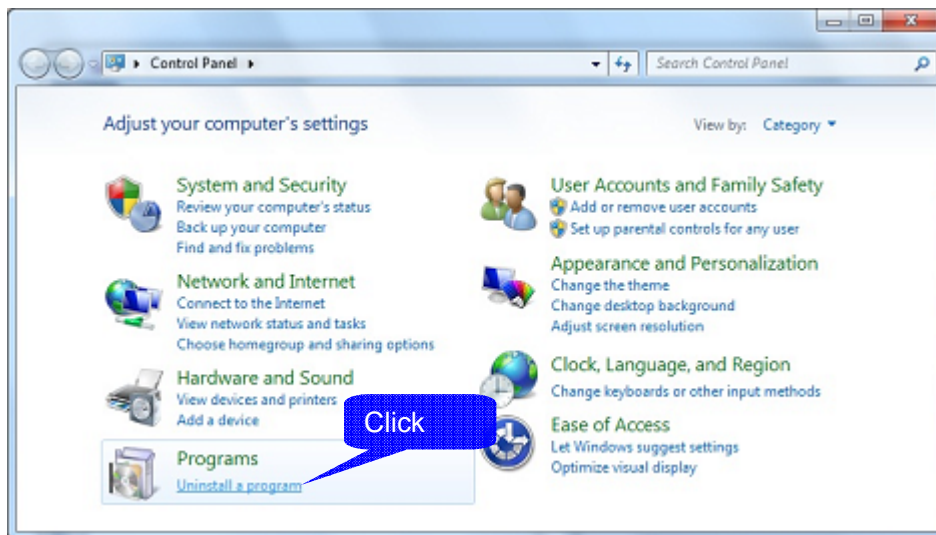
If you no longer need the PW3360/PW3365 Settings and Download Application, follow the instructions below to remove it from your system.

6.1.1 On Windows 7

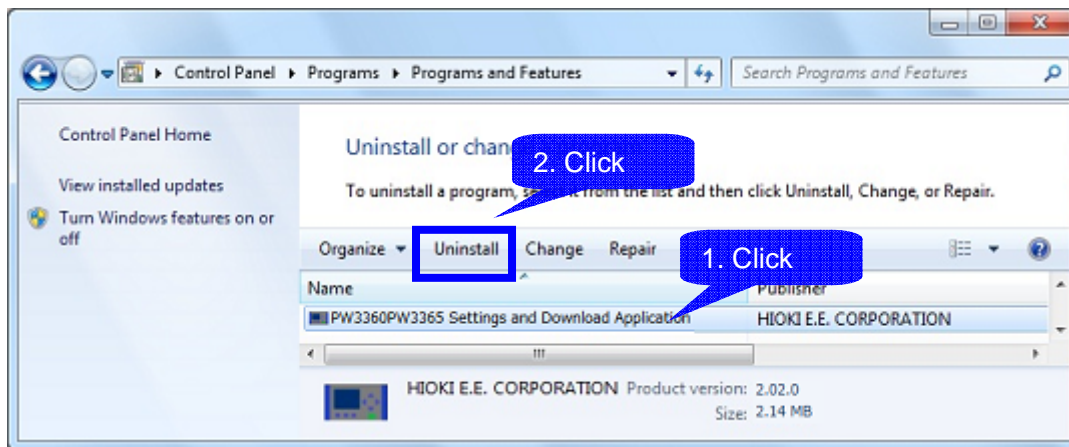
1. Select [Control Panel] from the Start Menu.



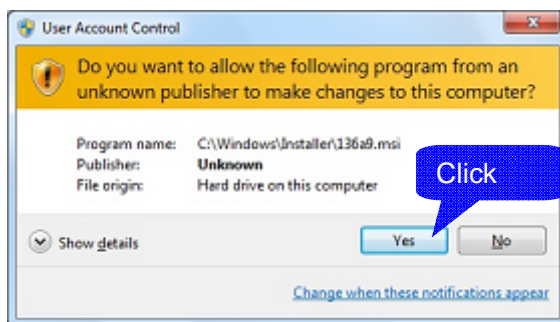
2. Click [Uninstall a program].



3. Select [PW3360PW3365 Settings and Download Application] from the list of installed programs, then click [Uninstall].



If a dialog appears asking if you want to continue execution, click [Yes] to continue.



6.1.2 On Windows XP

1. Select [Control Panel] from the Start Menu.



2. Double-click [Add or Remove Programs].

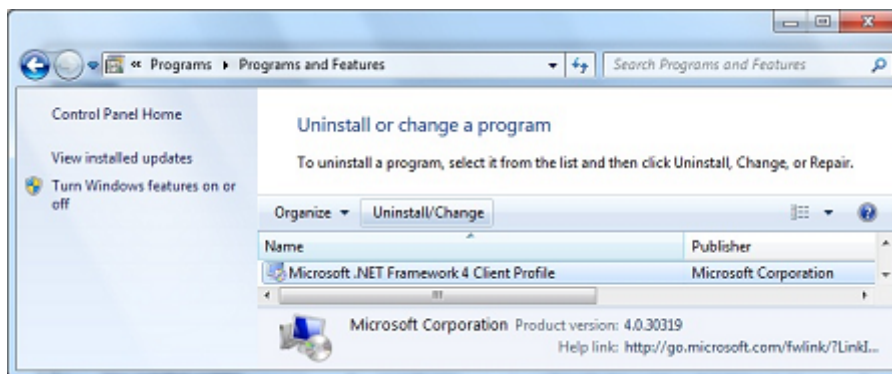


3. Select [PW3360PW3365 Settings and Download Application] from the list of installed programs and delete it.

This returns you to the [Add or Remove Programs] dialog.

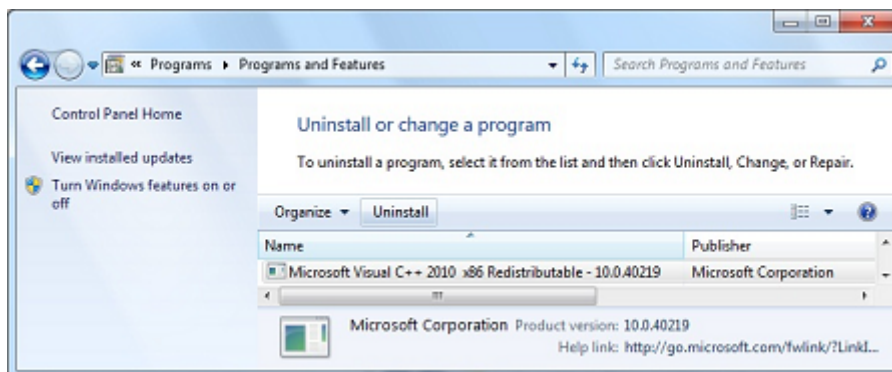
6.2 Uninstalling the Microsoft .NET Framework 4 Client Profile

Follow the same procedure as above for uninstalling the PW3360/PW3365 Settings and Download Application, but this time select [Microsoft .NET Framework 4 Client Profile] from the list and delete it.



6.3 Uninstalling the Microsoft Visual C++ 2010 SP1 Redistributable Package (x86)

Follow the same procedure as above for uninstalling the Settings and Download Application, but this time select [Microsoft Visual C++ 2010 x86 Redistributable - 10.0.40219] from the list and delete it.



7. Specifications

7.1 General Specifications

Compatible Model	PW3360/PW3365 Clamp On Power Logger	
Operating Environment	Any personal computer that meets the following system requirements:	
	Computer	PC/AT Compatible (DOS/V)
	OS	<ul style="list-style-type: none"> • Windows XP SP3 or later (32-bit) • Windows Vista SP2 or later (32-bit) • Windows 7 SP1 or later (32 or 64-bit) • Windows 8 (32 or 64-bit) <p>The following software must also be installed:</p> <ul style="list-style-type: none"> • Microsoft .NET Framework 4 Client Profile • Microsoft Visual C++ 2010 SP1 Redistributable Package (x86) • USB drivers (for PW3360/PW3365) *If using USB communications
	CPU	1.0 GHz or better (2.0 GHz or better recommended)
	RAM	1GB(x86) or 2GB(x64) or more
	Hard Disk	At least 128 MB of free space (when launched)
	Display	1024 x 768 or better resolution, minimum of 65,536 colors
	LAN Specifications	10BASE-T/100BASE-TX
	LAN Protocol	TCP/IP
	USB Specifications	USB 2.0

7.2 Function Specifications

Download Function

Compatible Formats	SD card or any folders/files created in the PW3360/PW3365's internal memory
Communications Methods	LAN (Ethernet) or USB (Virtual COM)
Cancel	Leaves any completely downloaded files, but deletes partially downloaded files.
Download Restrictions	<p>Only files can be downloaded when the PW3360/PW3365 is measurement or on standby.</p> <p>Measurement files that are currently being recorded can be downloaded only when the save interval of PW3360/PW3365 is more than 1 minute.</p>

Setup Function

Configurable Setting Items	Backlight
	Beep sound
	Language

Display color
Phase name
Display QUICK SET at power ON
PF/Q/S calculation selection
THD selection (for PW3360-21,31 Only)
Wiring
Frequency range
Clamp sensor
Current range
Selected CT ratio
Custom CT ratio
Selected VT ratio
Custom VT ratio
Save destination
Screen save
Waveform save
Save items
Measurement start method
Measurement stop method
Measurement start time
Measurement stop time
Record period
Segment folder
Timer
Save interval time
Data folder name
Pulse output rate (for PW3360 Only)
Pulse scaling (for PW3360 Only)
Pulse filter (for PW3360 Only)
Pulse auxiliary unit (for PW3360 Only)
Pulse unit (for PW3360 Only)
Electricity charges currency
Electricity charge unit cost
Zoom items of measurement screen
Harmonic graph items of measurement screen (for PW3360-21,31

	Only)
	Harmonic list items of measurement screen (for PW3360-21,31 Only)
	Time series items of measurement screen
	Demand items of measurement screen
	Date and time

Load/Save settings file Function

Supported Data Formats	PW3360/PW3365:Settings files (files with a .SET extension)
Location of the setting file	In the “SETTING” folder. (When saving at SD card.)
Maximum reference number of setting file	20 file.

Command Transmitting and Receiving Function

Communications Methods	LAN (Ethernet) or USB (Virtual COM)
Message restriction	Message to get the file data are not allowed.
Maximum number of received characters	60000

PW3360/PW3365 Settings and Download Application

User's Manual

Published June, 2014, Revised Edition 2

Edited and Published by HIOKI E.E. CORPORATION, Technology 4 Section

HIOKI E.E. Corporation

Headquarters

81 Koizumi, Ueda, Nagano 386-1192, Japan

TEL +81-268-28-0562 FAX +81-268-28-0568 E-mail:os-com@hioki.co.jp

URL <http://www.hioki.com/>

(International Sales and Marketing Department)

HIOKI USA CORPORATION

E-mail:hioki@hiokiusa.com

URL <http://www.hiokiusa.com>

HIOKI (Shanghai) Sales & Trading Co.,Ltd.

E-mail:info@hioki.com.cn

URL <http://www.hioki.cn>

HIOKI INDIA PRIVATE LIMITED

E-mail:info@hioki.in

URL <http://www.hioki.in>

HIOKI SINGAPORE PTE. LTD.

E-mail:info@hioki.com.sg

- This document was authored with the utmost diligence; however, please contact our Sales Planning Division or your nearest sales office if you notice any mistakes or if you have any other questions about the materials found within.
- The contents of this manual may be changed at any time without prior notice.
- This manual contains some copyrighted material. The unauthorized reproduction, copy, or modification of this manual without consent is prohibited.