

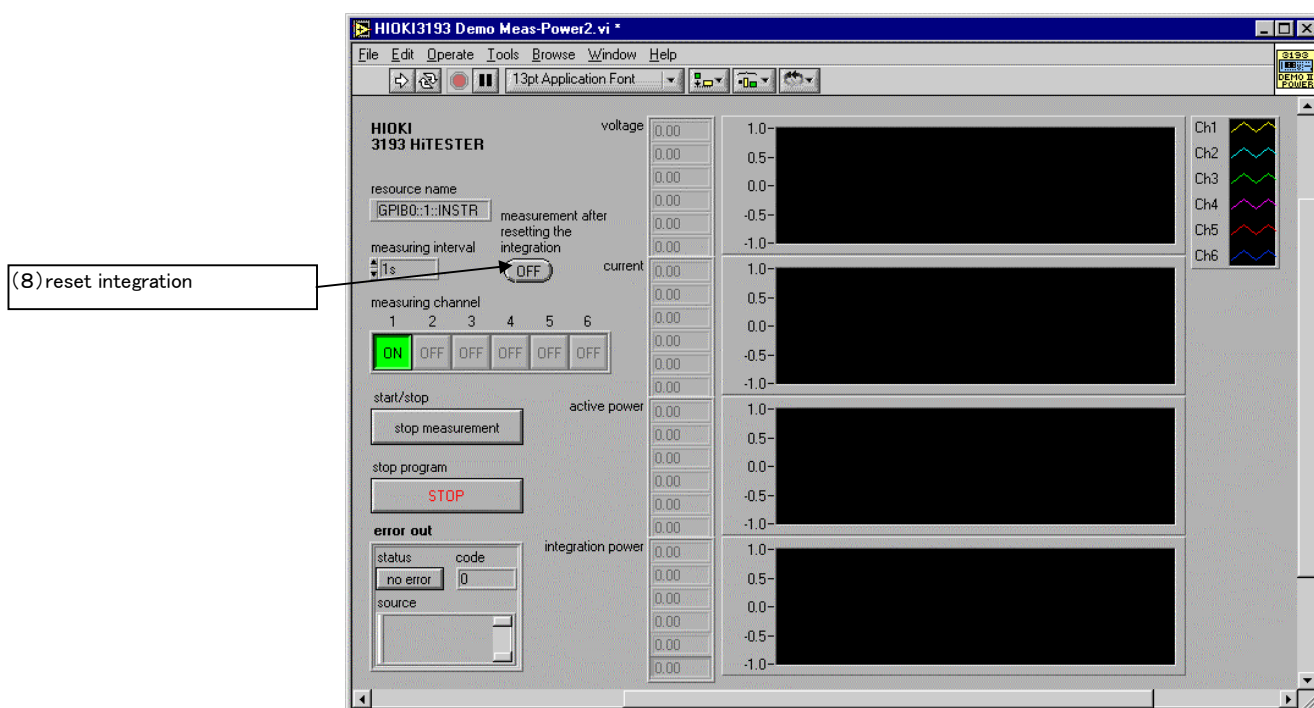
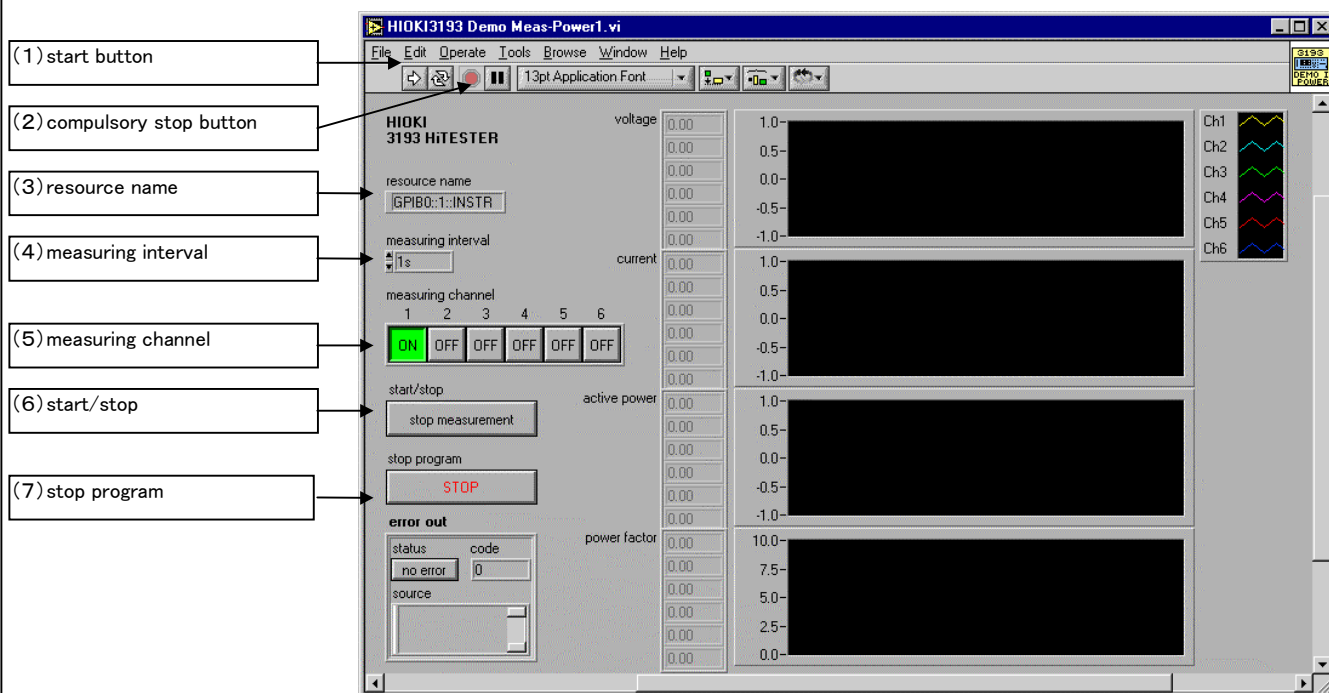
DOCUMENT No.	TITLE	PAGE
	Application Program	1
BACKGROUND	Direction for use	

●The procedure of using application program.

1. The method of start and stop

Opens the HIOKI3193 Demo Meas-Power1.vi and HIOKI3193 Demo Meas-Power2.vi, the screens as follow will appears

Click the 「(1)start button」 to start. Click the 「(7)stop program」 to stop. Click the 「(2)compulsory stop button」 to stop by compulsion.



DOCUMENT No.	TITLE	PAGE
	Application Program	2
BACKGROUND	Direction for use	

2.The functions of application program.

1)HIOKI3193 Demo Meas-Power1.vi

specify channels(1-6), select the measuring interval for channel of 3193 unit, measure the items of 3193 unit as the following, get the value, and display on the graphs.

- voltage
- current
- active power
- power factor

2)HIOKI3193 Demo Meas-Power2.vi

specify channels(1-6), Select the measuring interval for channel of 3193 unit, measure the items of 3193 as the following, get the value, and display on the graphs.

- voltage
- current
- active power
- integration power

3.Selecting address of 3193 unit.

Use 「(3)resource name」 to select address of 3193 unit.

The initialized input:

GPIB0::1::INSTR

4.The procedure of use

The following is the procedure after starting the program.

1) Specify measurement interval by 「(4)measuring interval」,
specify channel for measurement by 「(5)measuring channel」.

In case of HIOKI3193 Demo Meas-Power2.vi, Switch 「(8)reset integration」 to ON to reset integration value before measurement If need be

2) Press 「(6)start/stop」 button to start measurement

→ If the button is displaying 「measuring」, it means measuring.

3) In the case of pausing measurement, press 「(6)start/stop」 button again.

→ If the button is displaying 「stop measure」, it means pausing, and 1), 2) are permitted to do again.

4) do 2) to resume measurement.

DOCUMENT No.	TITLE	PAGE
	Application Program	3
BACKGROUND	Direction for use	

5. Notes

- 1) These application programs can not deal with all functions of 3193 unit.
- 2) The LabVIEW WAIT is used for measuring interval.
- 3) These application programs do not support to serial communication.
- 4) Refers to manual of 3193 unit to get other information.