

PW3360/PW3365 Auto Excel Graph Creation Application User's Manual

Table of Contents

1. Introduction.....	2
1.1 Overview.....	2
1.2 Copy/Transfer/Copyright, and other Cautions	2
1.2.1 Copyright	2
1.2.2 Conditions for Use.....	2
1.2.3 Responsibilities for Use.....	2
1.3 Required System Configuration	3
2. Installation	4
3. Usage Instructions	9
3.1 Generating Graphs.....	9
3.2 Set the Graph Type	10
3.3 Set the Graph Items.....	11
3.4 Viewing the Data Range of the File	11
3.5 Set the Chart Range	12
3.6 Set the Display Interval	12
3.7 Applying the Settings to the Graph.....	13
3.7.1 Adding New Graph and List Sheets in Excel	13
3.7.2 Updating Already Open Graph and List Sheets.....	13
4. Uninstallation.....	13
4.1 Uninstalling the PW3360/PW3365 Auto Excel Graph Creation Application	13
4.1.1 On Windows 7	13
4.1.2 On Windows XP	15
4.2 Uninstalling the Microsoft .NET Framework 4 Client Profile	16
5. Specifications.....	16
5.1 General Specifications.....	16
5.2 Function Specifications.....	17

1. Introduction

1.1 Overview

The PW3360/PW3365 Auto Excel Graph Creation Application is software designed for use with the PW3360/PW3365 Clamp On Power Logger.

You can use this software to automatically generate graphs from CSV files you create on the PW3360/PW3365.

1.2 Copy/Transfer/Copyright, and other Cautions

1.2.1 Copyright

HIOKI E.E. CORPORATION reserves all rights, including copyrights, to the program's executable files and documents.

1.2.2 Conditions for Use

This software cannot be repackaged for sale with any printed material, software, or other bundle for profit without the permission of the copyright owner. Furthermore, this software cannot be reverse engineered or modified in any way without the permission of the copyright owner.

1.2.3 Responsibilities for Use

-This application is software that is provided free of charge. It may be used freely under the responsibility of the user.

-HIOKI E.E. CORPORATION shall not be held responsible for any damages resulting from the use of this application.

-HIOKI E.E. CORPORATION shall not be held responsible for any bugs or other problems that result from the use of this application.

-HIOKI E.E. CORPORATION will not answer any questions related to this application.

-The application may be changed at any time without prior notice.

Note: Windows and Microsoft .NET Framework are the registered trademarks or trademarks of Microsoft Corporation in the United States of America.

1.3 Required System Configuration

The following system requirements must be met to run the PW3360/PW3365 Auto Excel Graph Creation Application.

Computer	PC/AT Compatible (DOS/V)
OS	Windows XP SP3 or higher (32-bit) Windows Vista SP2 or higher (32-bit) Windows 7 SP1 (32 or 64-bit) Windows 8 (32 or 64-bit) The following software must also be installed: • Microsoft .NET Framework 4 Client Profile • Microsoft Office Excel 2003, Excel 2007 or Excel 2010
CPU	1.0 GHz or better (2.0 GHz or better recommended)
RAM	1GB(x86) or 2GB(x64) or more
Hard Disk	At least 128 MB of free space (when launched)
Display	1024 x 768 or better resolution, minimum of 65,536 colors

Note: The software may not run properly on some machines, even if the above requirements are met.

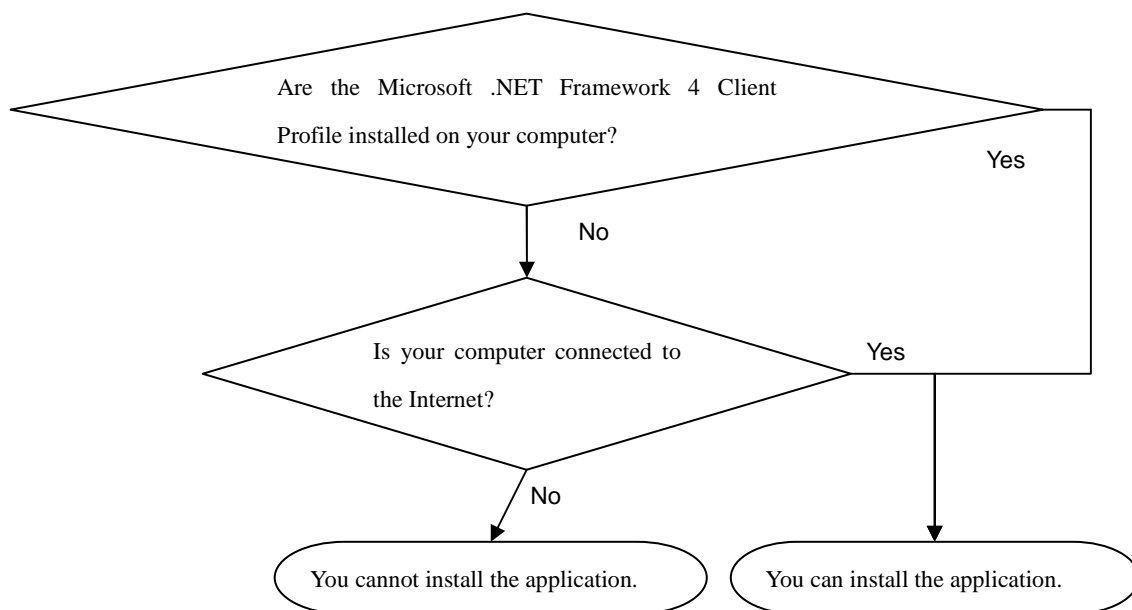
2. Installation

To install this application, the [Microsoft .NET Framework 4 Client Profile](#) must be installed.

If this package is not installed and your computer is connected to the Internet, the Microsoft .NET Framework 4 Client Profile will be downloaded and installed automatically before the application is installed.

If this package is not installed and your computer is not connected to the Internet, you will be unable to install the application.

You can also download the Microsoft .NET Framework 4 Client Profile yourself from the Microsoft homepage.



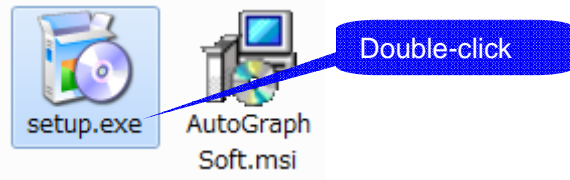
Note

- Be sure to install the application as Administrator.
- You may not be able to install the application if other applications are running. Close as many applications as you can before installing. Antivirus software in particular may prohibit the software from being installed, even if there are no viruses detected. If this should occur, configure your antivirus software in order to allow you to install the application.

Example: Installation on Windows 7

* The messages that appear here in this example may vary depending on your installed OS.

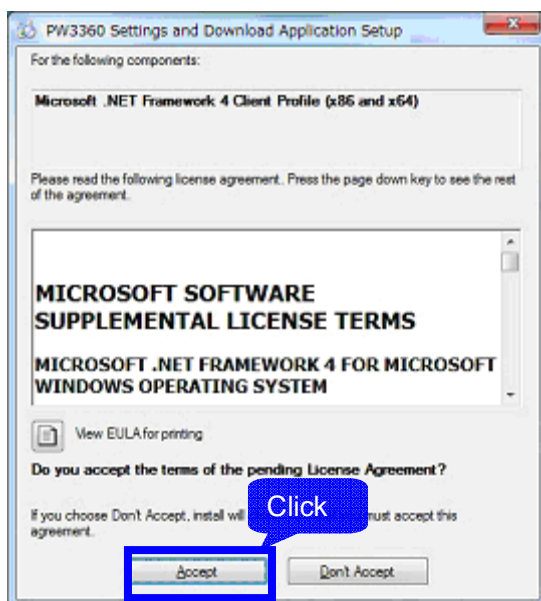
1. Close all open applications.
2. Double-click on [setup.exe] (the SETUP file) (The .exe file extension may not appear in some cases.) to launch the installer.



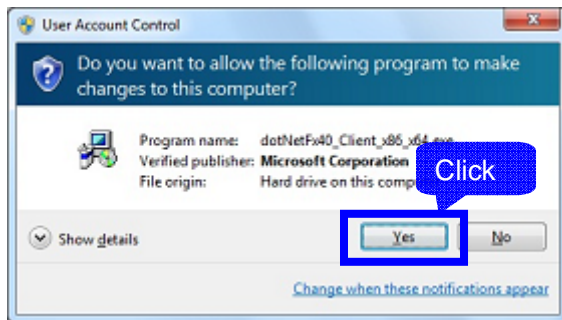
3. If the Microsoft .NET Framework 4 Client Profile is not installed on your computer

If the Microsoft .NET Framework 4 Client Profile is not yet installed on your computer, the following screen is displayed. [Be sure that your computer is connected to the Internet](#), and then proceed with the installation.

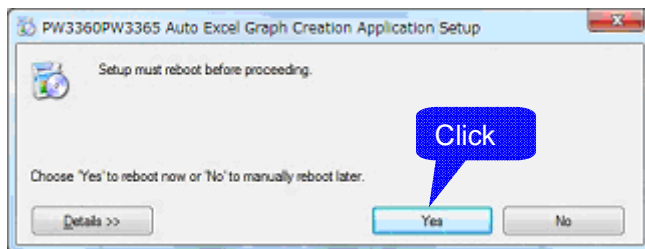
Click [Accept].



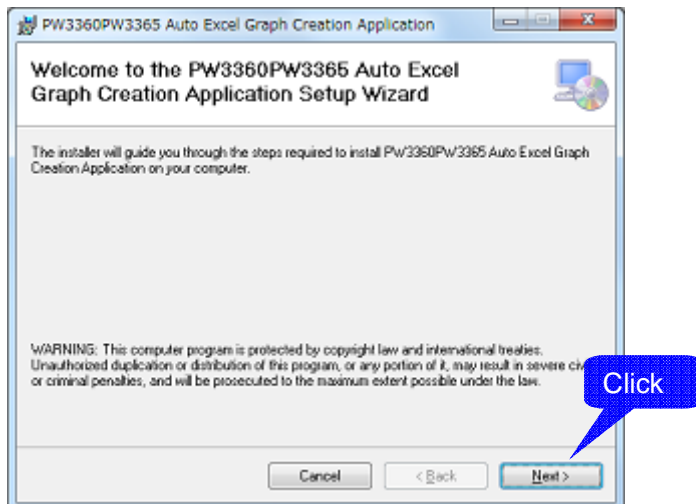
If a dialog appears asking if you want to continue execution, click [Yes] to continue.



If a message appears requesting you to restart your computer, click [Yes] and restart your computer. Upon restarting, the installation will resume automatically.



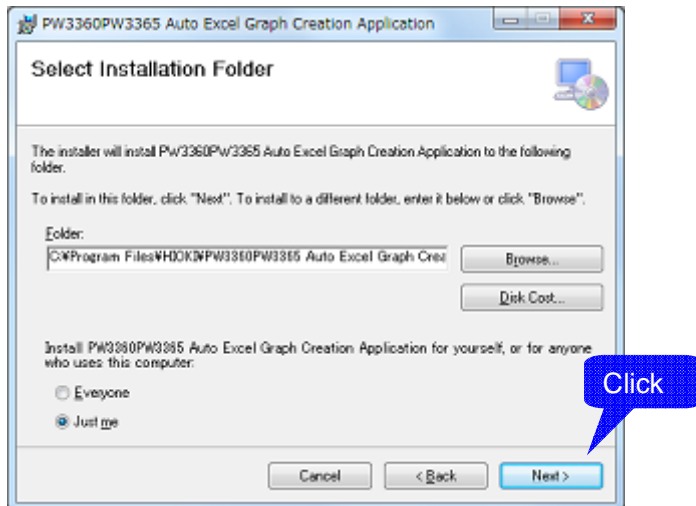
4. Click [Next] when the PW3360PW3365 Auto Excel Graph Creation Application Setup Wizard is displayed, then check the installation destination.



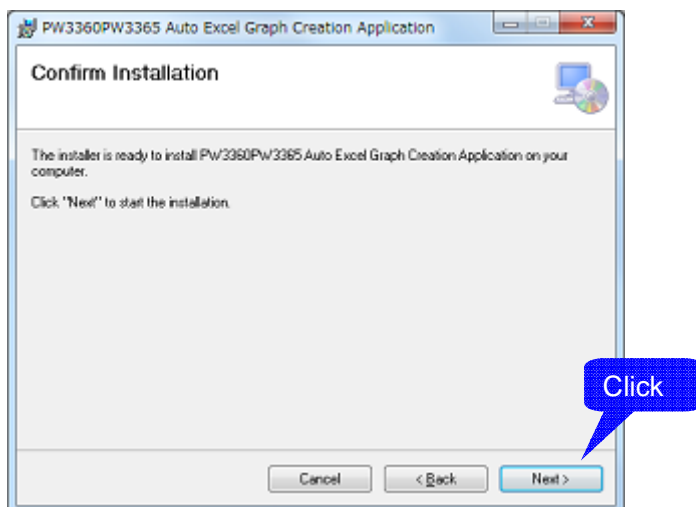
5. Specify the installation folder.

If you want to change the installation folder, click [Browse] and change the installation folder. Normally this folder does not need to be changed.

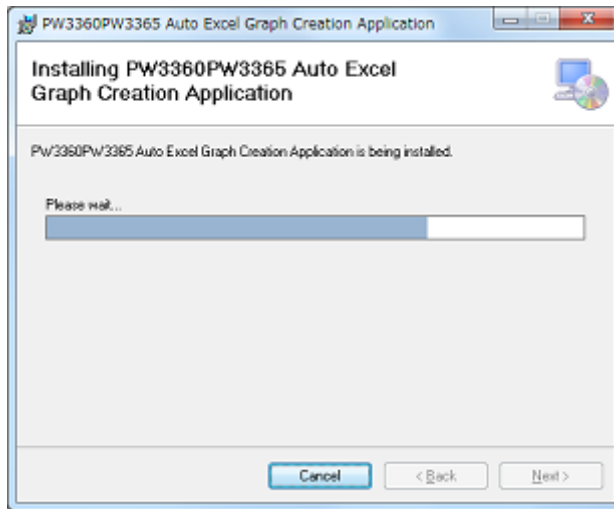
If you do not need to change the installation folder, click [Next] to continue.



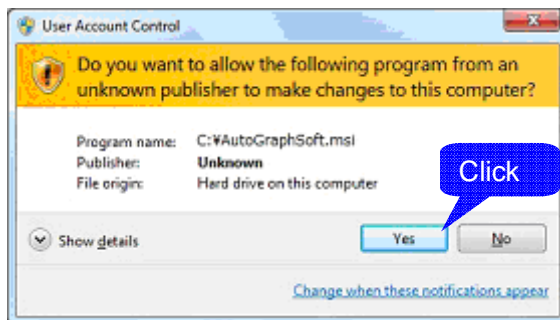
Click [Next].



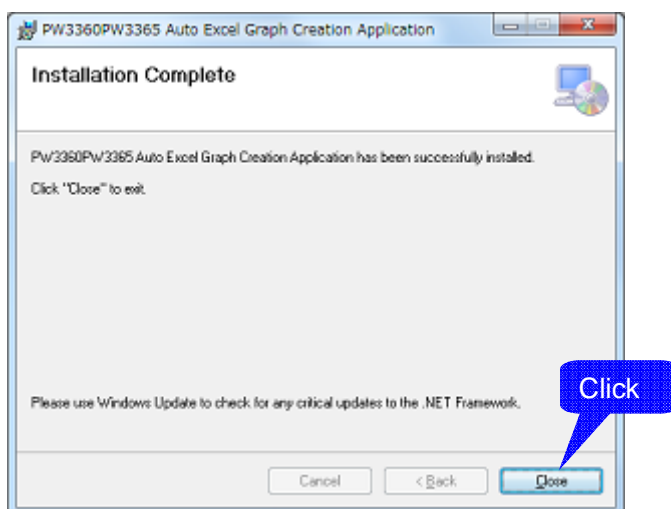
6. The installation begins.



If a dialog appears asking if you want to continue execution, click [Yes] to continue.



7 Click [Close] once the installation has finished.



3. Usage Instructions

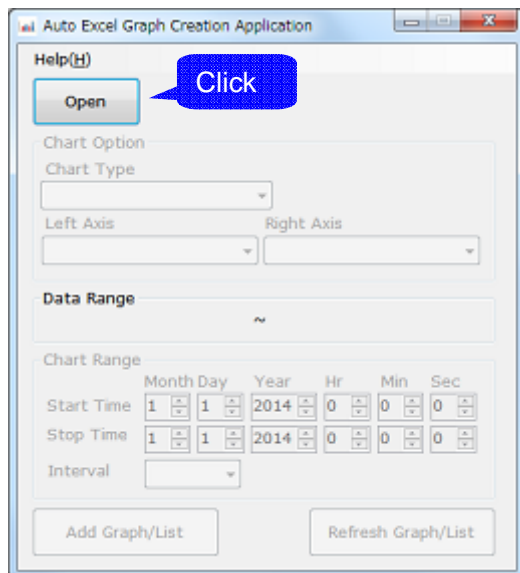
Select [All Programs] - [HIOKI] - [PW3360PW3365] - [PW3360PW3365 Auto Excel Graph Creation] from the Start Menu to launch the application.

3.1 Generating Graphs

Click [Open].

The file selection dialog is displayed. Select the CSV file that was created from measuring on the PW3360/PW3365. A graph is generated automatically from the CSV data.

- Note:
- If you have any other files open in Excel already, those files may be damaged. Close all open Excel files when you are running this software. We also recommended making a backup of any CSV files you open, just to be safe.
 - The maximum number of data items that can be displayed is 1,000.
 - If the size of the CSV file is very large, it may take some time to generate the graph.
 - The graph may not be generated if cells are currently being edited in the Excel file.
 - Only CSV files made on the PW3360/PW3365 can be loaded.
 - Files that were made on the PW3360/PW3365 but that have been edited cannot be loaded.

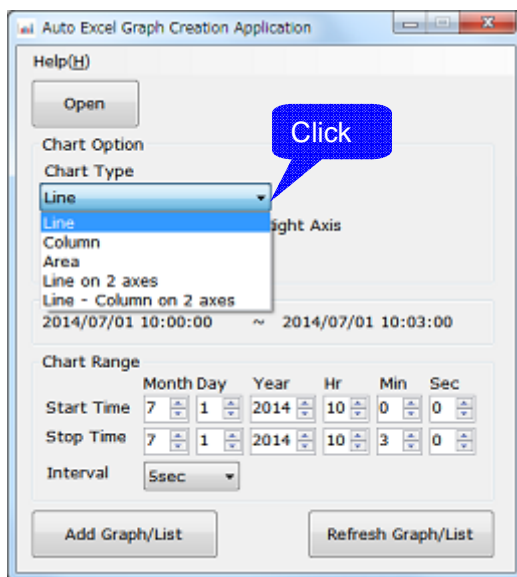


3.2 Set the Graph Type

Select the type of graph to generate from the list. You can select from the following five types of graphs:

- Line
- Column
- Area
- Line on 2 axes
- Line - Column on 2 axes

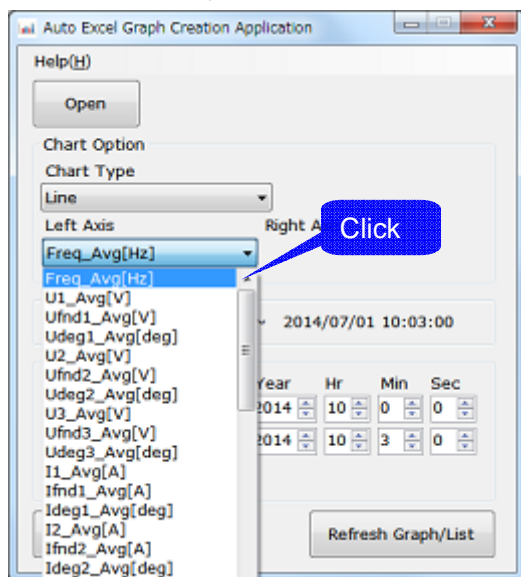
Note: When you create a new graph by clicking [Open], the graph type is set to Line by default.



3.3 Set the Graph Items

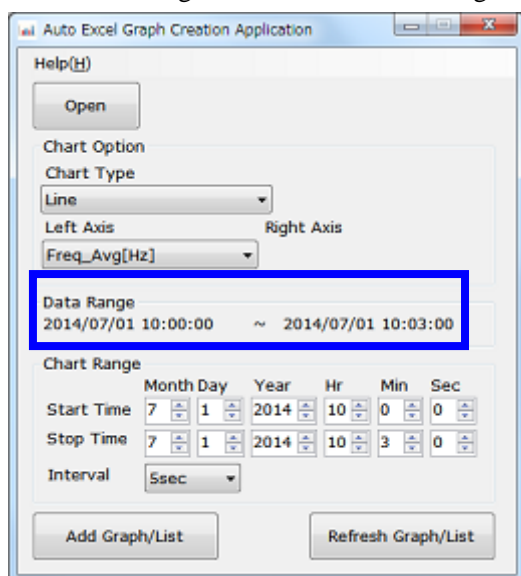
To change the item for the left axis, select an item from the list for the left axis.

If you have set the graph type to [line on 2 axes] or [Line - Column on 2 axes], you can also change the item for the right axis. Select an item from the list.



3.4 Viewing the Data Range of the File

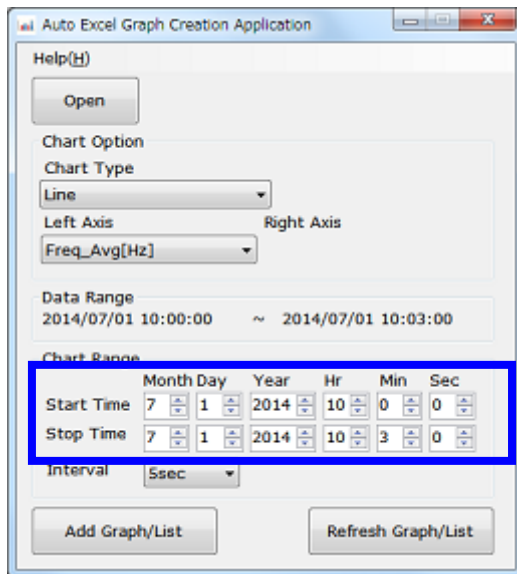
The Data Range area shows the data range of the file used to generate the graph.



Note: It is not possible to display all data range of measurement file depending on Excel version.

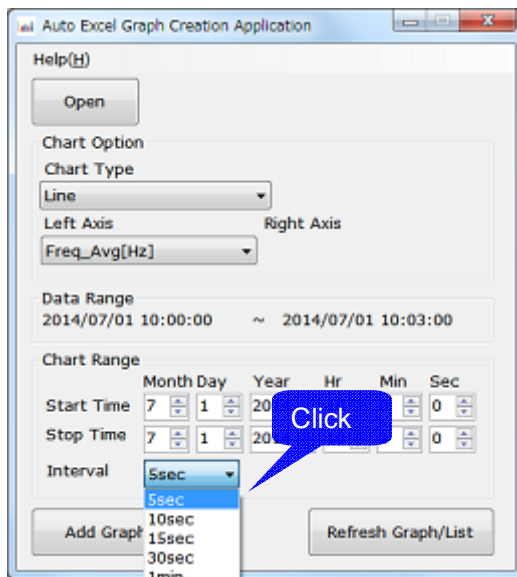
3.5 Set the Chart Range

Enter the start and stop times for the graph.



3.6 Set the Display Interval

Select the display interval from the list. Display intervals that cannot be selected is not displayed in the list.



3.7 Applying the Settings to the Graph

3.7.1 Adding New Graph and List Sheets in Excel

Click [Add Graph/List].

3.7.2 Updating Already Open Graph and List Sheets

Click [Refresh Graph/List].

The graph and data last added are overwritten and updated.

Note: If you have deleted the last added sheet, an error will occur.

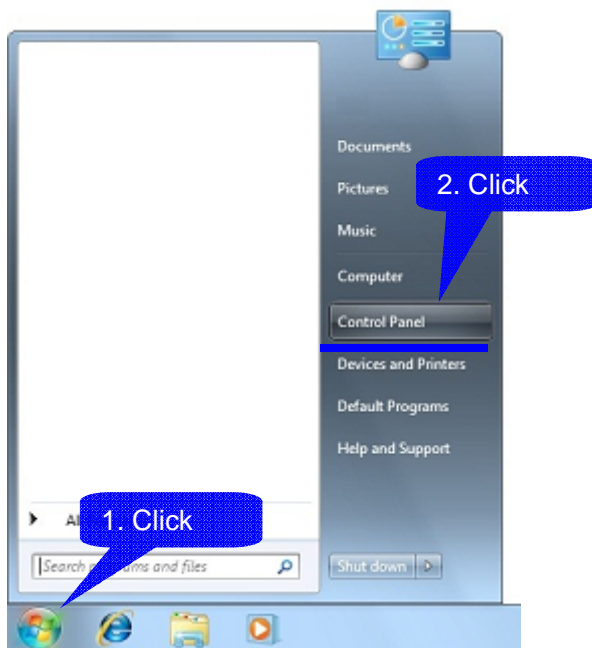
4. Uninstallation

4.1 Uninstalling the PW3360/PW3365 Auto Excel Graph Creation Application

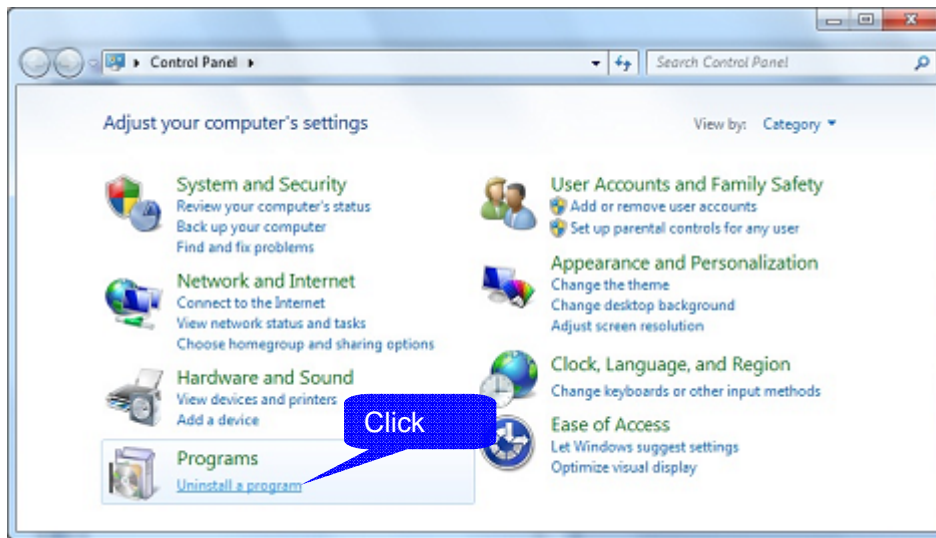
If you no longer need the PW3360/PW3365 Auto Excel Graph Creation Application follow the instructions below to remove it from your system.

4.1.1 On Windows 7

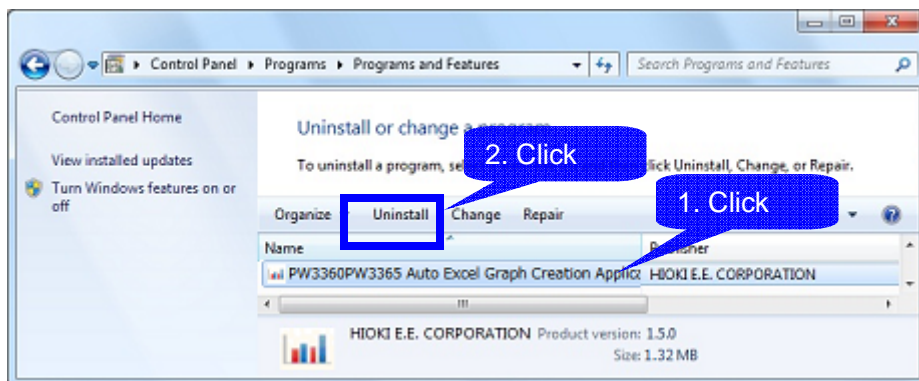
Select [Control Panel] from the Start Menu.



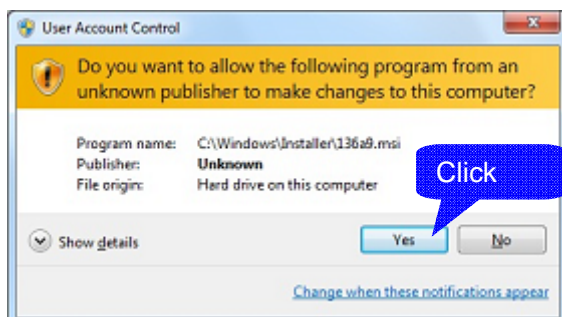
2. Click [Uninstall a program].



3. Select [PW3360PW3365 Auto Excel Graph Creation Application] from the list of installed programs, then click [Uninstall].



If a dialog appears asking if you want to continue execution, click [Yes] to continue.



4.1.2 On Windows XP

1. Select [Control Panel] from the Start Menu.



2. Double-click [Add or Remove Programs].

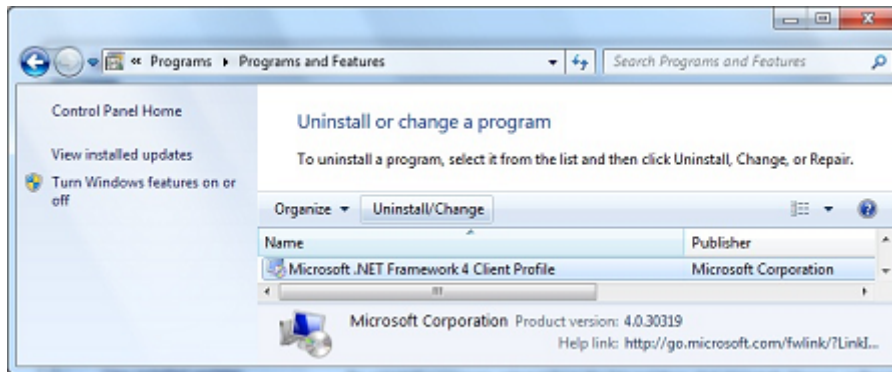


3. Select [PW3360PW3365 Auto Excel Graph Creation Application] from the list of installed programs and delete it.

This returns you to the [Add or Remove Programs] dialog.

4.2 Uninstalling the Microsoft .NET Framework 4 Client Profile

Follow the same procedure as above for uninstalling the PW3360/PW3365 Auto Excel Graph Creation Application, but this time select [Microsoft .NET Framework 4 Client Profile] from the list and delete it.



5. Specifications

5.1 General Specifications

Compatible Model	PW3360/PW3365 Clamp On Power Logger	
Operating Environment	Any personal computer that meets the following system requirements:	
	Computer	PC/AT Compatible (DOS/V)
	OS	<ul style="list-style-type: none"> • Windows XP SP3 or later (32-bit) • Windows Vista SP2 or later (32-bit) • Windows 7 SP1 or later (32 or 64-bit) • Windows 8 (32 or 64-bit) <p>The following software must also be installed:</p> <ul style="list-style-type: none"> • Microsoft .NET Framework 4 Client Profile • Microsoft Office Excel 2003, Excel 2007 or Excel 2010
	CPU	1.0 GHz or better (2.0 GHz or better recommended)
	RAM	1GB(x86) or 2GB(x64) or more
	Hard Disk	At least 128 MB of free space (when launched)
	Display	1024 x 768 or better resolution, minimum of 65,536 colors

5.2 Function Specifications

Graph Display Function

Supported Data Formats for Importing	PW3360/PW3365: Measurement data files (.csv or .CSV files)
Maximum Displayable Data Items	1000
Minimum Displayable Data Items	
Graph Display Items	Voltage RMS Current RMS Voltage fundamental wave value Current fundamental wave value Voltage fundamental wave phase angle Current fundamental wave phase angle Frequency Voltage waveform peak Current waveform peak Active power Reactive power Apparent power Power factor or displacement power factor Active energy (consumption, regeneration) Reactive energy (lagging, leading) Active power demand quantity(consumption, regeneration) Reactive power demand quantity(lagging, leading) Active power demand value (consumption, regeneration) Reactive power demand value (lagging, leading) Power factor demand value Pulse(PW3360 only)
Available Interval Times	1 second 2 seconds 5 seconds 10 seconds 15 seconds 30 seconds 1 minute

	2 minutes 5 minutes 10 minutes 15 minutes 20 minutes 30 minutes 60 minutes
Setting the Display Time Period	<p>You can specify any range of time within the range of time that data was measured.</p> <ul style="list-style-type: none"> • Enter numerical values for the display start date (year/month/day/hours/minutes/seconds) • Enter numerical values for the display stop date (year/month/day/hours/minutes/seconds) <p>The time period of the measurement data (measurement start and end times) can also be displayed.</p>
Types of Graphs	Line Column Area Line on 2 axes Line - Column on 2 axes

PW3360/PW3365 Auto Excel Graph Creation Application

User's Manual

Published August, 2014, Revised Edition 3

Edited and Published by HIOKI E.E. CORPORATION, Technology 4 Section

HIOKI E.E. Corporation

Headquarters

81 Koizumi, Ueda, Nagano 386-1192, Japan

TEL +81-268-28-0562 FAX +81-268-28-0568 E-mail:os-com@hioki.co.jp

URL <http://www.hioki.com/>

(International Sales and Marketing Department)

HIOKI USA CORPORATION

E-mail:hioki@hiokiusa.com

URL <http://www.hiokiusa.com>

HIOKI (Shanghai) Sales & Trading Co.,Ltd.

E-mail:info@hioki.com.cn

URL <http://www.hioki.cn>

HIOKI INDIA PRIVATE LIMITED

E-mail:info@hioki.in

URL <http://www.hioki.in>

HIOKI SINGAPORE PTE. LTD.

E-mail:info@hioki.com.sg

- This document was authored with the utmost diligence; however, please contact our Sales Planning Division or your nearest sales office if you notice any mistakes or if you have any other questions about the materials found within.
- The contents of this manual may be changed at any time without prior notice.
- This manual contains some copyrighted material. The unauthorized reproduction, copy, or modification of this manual without consent is prohibited.