

**LR8512 WIRELESS PULSE LOGGER / LR8513 WIRELESS CLAMP LOGGER
LR8514 WIRELESS HUMIDITY LOGGER / LR8515 WIRELESS VOLTAGE/TEMP LOGGER
Version Upgrade**

Each instruments name is mentioned as follows.

Product Name	Mentioned
LR8410-20 WIRELESS LOGGING STATION	instrument
LR8512 WIRELESS PULSE LOGGER	wireless logger
LR8513 WIRELESS CLAMP LOGGER	
LR8514 WIRELESS HUMIDITY LOGGER	
LR8515 WIRELESS VOLTAGE/TEMP LOGGER	

In case of the customer who has LR8410-20 WIRELESS LOGGING STATION.

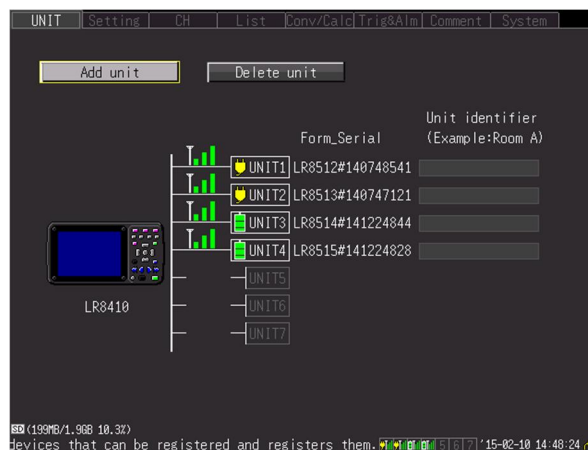
To Begin:

1. Obtain a USB Memory Stick or HIOKI-issued SD Card.
This will be used to save the version upgrade file as well as load the file onto the instrument.
2. Download the version upgrade file from the HIOKI website.
3. Decompress the downloaded file (ZIP format) onto your PC's hard disk.
4. Copy the contents of the folder into the USB Memory Stick or HIOKI-issued SD Card.

Register wireless loggers with the instrument:

1. Place measurement units close to the instrument.
2. Connect an AC adapter or battery pack to the instrument and wireless loggers.
3. Turn on both the instrument and wireless loggers.
4. Register wireless loggers on the UNIT screen of the instrument.

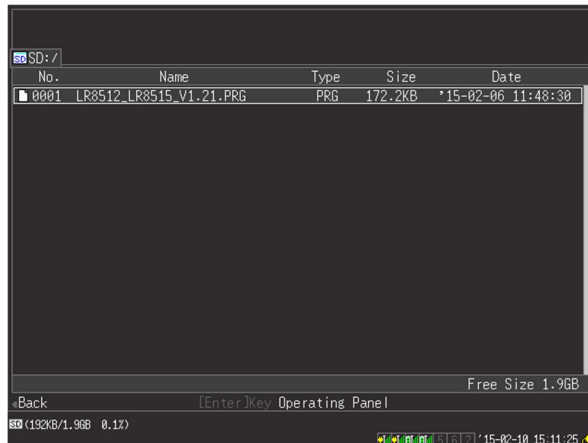
It's possible to register even at most 7 and upgrade at the same time.



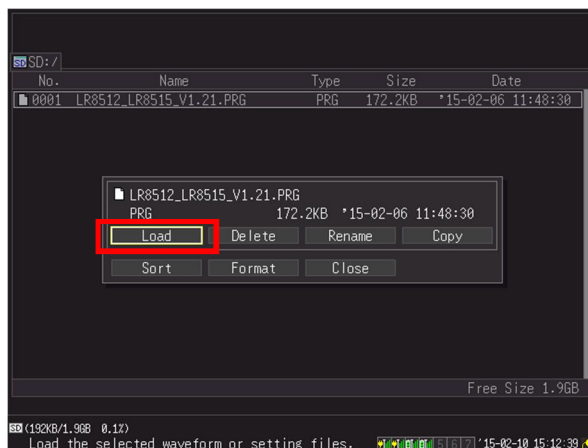
Upgrade Procedures:

The following procedures apply to the use of a HIOKI-issued SD Card to conduct a version upgrade.

1. Insert the SD Card saved with the version upgrade file into the instrument's SD Card slot.
2. Press the FILE key on the instrument to display the FILE screen.
3. Use the UP/DOWN/LEFT/RIGHT keys to navigate the cursor to the version upgrade file, and press the ENTER key.



4. Move the cursor to "Load" and press ENTER key.



5. Carefully read and understand the messages appearing on the display, and select "YES" to begin the version upgrade.

The version upgrade process will begin automatically, with the screen showing the upgrade status. Version upgrade will take approximately 2 minutes.

WARNING: During the version upgrade process, **DO NOT** manually turn off the power to the instrument and wireless loggers or remove the SD Card from the SD Card Slot. Doing so will result in failure to upgrade wireless loggers and wireless loggers must be returned to the HIOKI factory for repair.

Should the following messages appear, please follow the respective instructions on how to proceed.

Message	How to Proceed
WARNING(406) Process interrupted (not enough battery capacity)	<ul style="list-style-type: none"> The software cannot be updated with a low battery. Power the instrument and wireless loggers with AC adapter or charge the battery adequately first, or change for a new AA alkaline battery (LR6).
ERROR(007) Failed to update ROM.	<ul style="list-style-type: none"> Please turn on a power supply of Bluetooth module of wireless loggers. Check the communications state with the unit. If poor, move the instrument and wireless loggers to a location where good reception is possible If wireless logger is measuring or monitoring, please stop measurement or monitoring. The version upgrade file may have been corrupted. Download the version upgrade file from the HIOKI website again and retry.

6. When a version upgrade ends, wireless loggers restart automatically.

In the Self-Test under SYSTEM tab, move the cursor to Unit Information and press ENTER key. Please confirm that the software version shown to a screen becomes a newest version and Self-Test's result is OK.

The screenshot shows a 'Self-Test' screen with a table of unit information. A red box highlights the software version '1.21' for all units and the 'OK' status for each. The units listed are UNIT1 (LR8512 Pulse), UNIT2 (LR8513 Clamp), UNIT3 (LR8514 Temp/Humid), and UNIT4 (LR8515 Volt/Tc). Units 5, 6, and 7 are shown as dashes. At the bottom, it says 'Push any key to return.'

Unit Configuration	Self-Test
UNIT1 LR8512 Pulse	1.21 OK
UNIT2 LR8513 Clamp	1.21 OK
UNIT3 LR8514 Temp/Humid	1.21 OK
UNIT4 LR8515 Volt/Tc	1.21 OK
UNIT5 -----	
UNIT6 -----	
UNIT7 -----	

Push any key to return.

This completes the version upgrade procedure for Models LR8512, LR8513, LR8514 or LR8515.

In case of upgrading from Windows PC.

It can upgrade from the PC application “Wireless Logger Collector”.

For details, refer to the Instruction Manual.

Install the “Wireless Logger Collector”:

1. Close all the software that is running.
2. Set the supplied CD-R in the CD-ROM drive.
The installer starts automatically. If the installer does not start, execute [Setup.exe] on the CD-R.
3. Install the software according to the instructions displayed by the installer.

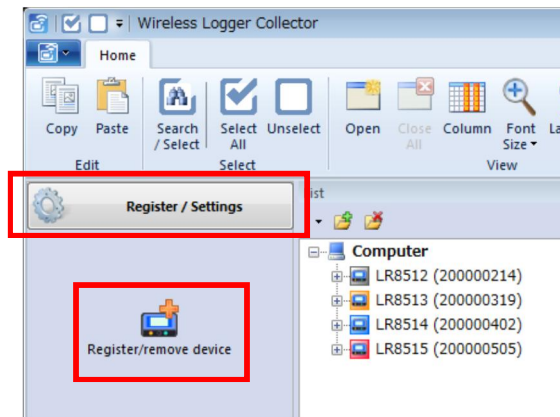
To Begin:

1. Download the version upgrade file from the HIOKI website.
2. Decompress the downloaded file (ZIP format) onto your PC's hard disk.
3. Execute “Import Version Upgrade File” from the application menu to load the downloaded file to the “Wireless Logger Collector”.

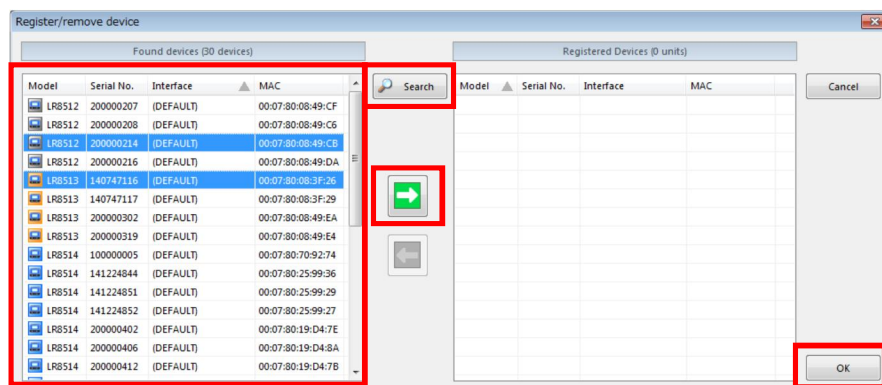


Register wireless loggers in the “Wireless Logger Collector”:

1. Place wireless loggers close to the PC.
(where there is no communications disturbance.)
2. Turn on the power.
(The wireless logger is powered up automatically when the AC adapter or battery is installed.)
Check that the Bluetooth power is ON.
3. Select “Register / Settings” from the Navigation bar.
The “Register / Remove Device” dialog box is displayed.

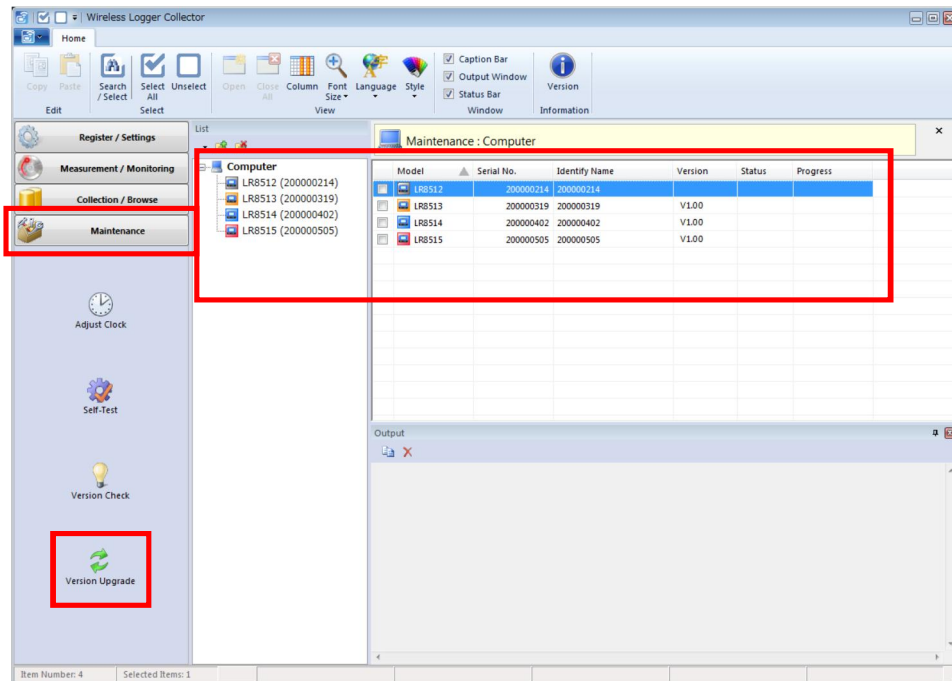


4. Click the “Search” button.
The result is displayed in the list on the left side.
5. Select wireless loggers to be registered from the list on the left and click the right arrow button.
Move to the list on the right side.
6. Click the “OK” button.



Upgrade Procedures:

1. Select “Maintenance” from the Navigation bar.
2. Select the target wireless loggers.
3. Press the “Version Upgrade” button.



4. Carefully read and understand the messages appearing on the display, and select “YES” to begin the version upgrade.

The version upgrade process will begin automatically, with the screen showing the upgrade status. Version upgrade will take approximately 1 minute.

WARNING: During the version upgrade process, **DO NOT** manually turn off the power to the PC and wireless loggers. Doing so will result in failure to upgrade wireless loggers and wireless loggers must be returned to the HIOKI factory for repair.

Should the following messages appear, please follow the respective instructions on how to proceed.

Message	How to Proceed
Comm. Err	<ul style="list-style-type: none"> ● Please turn on a power supply of Bluetooth module of wireless loggers. ● Check the communications state with wireless loggers. If poor, move the wireless loggers to a location where good reception is possible
Failed	<ul style="list-style-type: none"> ● The software cannot be updated with a low battery. Power the wireless loggers with AC adapter or change for a new AA alkaline battery (LR6).

	<ul style="list-style-type: none">● The version upgrade file may have been corrupted. Download the version upgrade file from the HIOKI website again and retry.
Error	<ul style="list-style-type: none">● If wireless logger is measuring or monitoring, please stop measurement or monitoring.

5. When a version upgrade ends, wireless loggers restart automatically.

Please confirm that the software version shown to a screen becomes a newest version.

This completes the version upgrade procedure for Models LR8512, LR8513, LR8514 or LR8515.